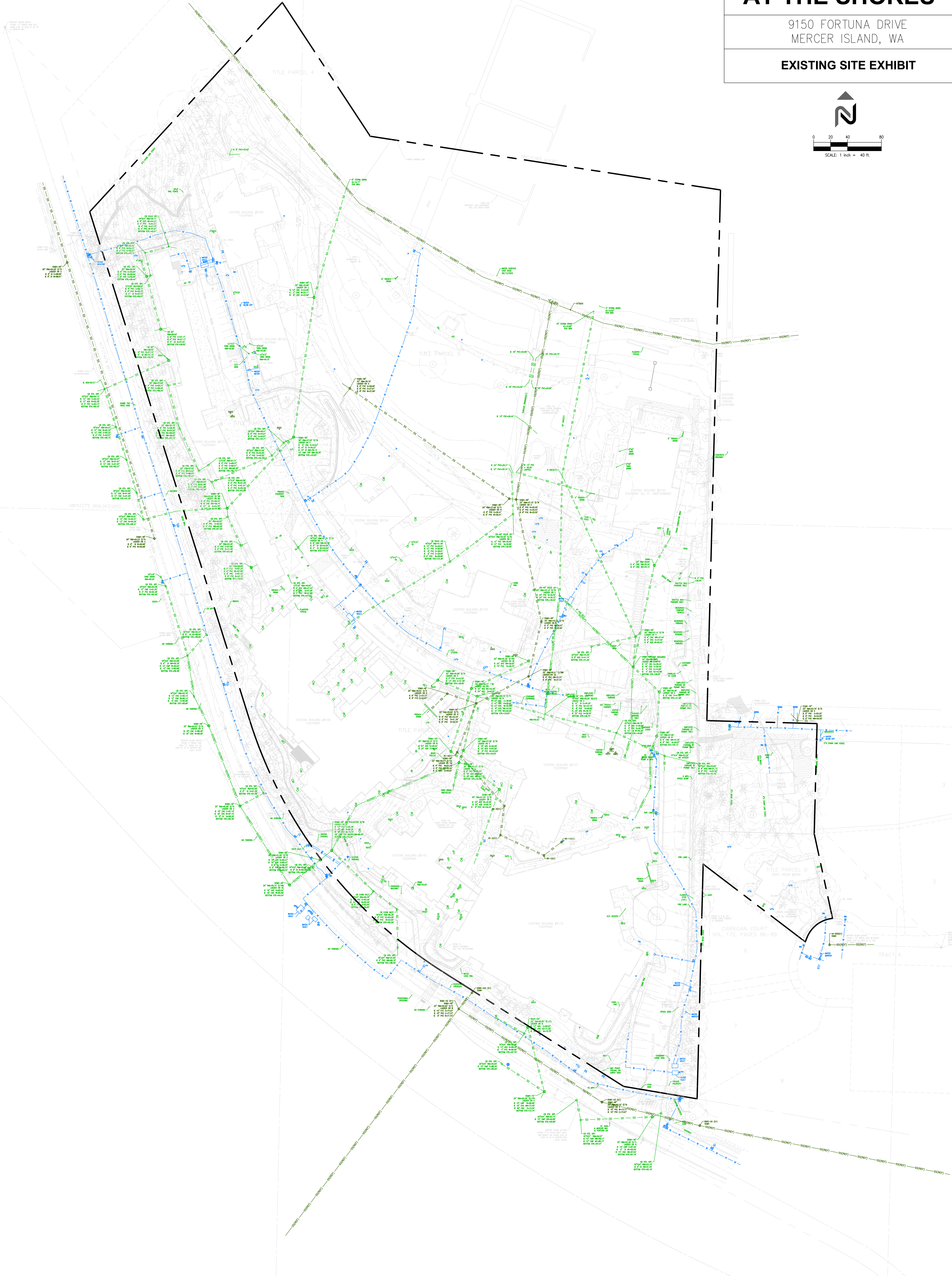
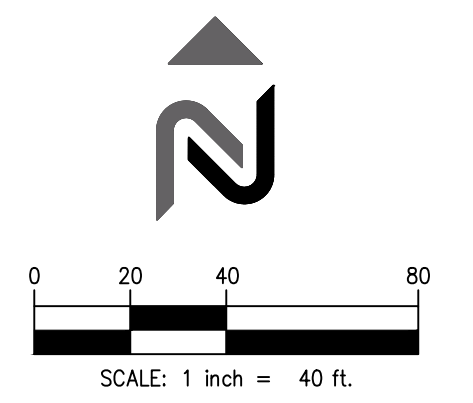


# COVENANT LIVING AT THE SHORES

9150 FORTUNA DRIVE  
MERCER ISLAND, WA

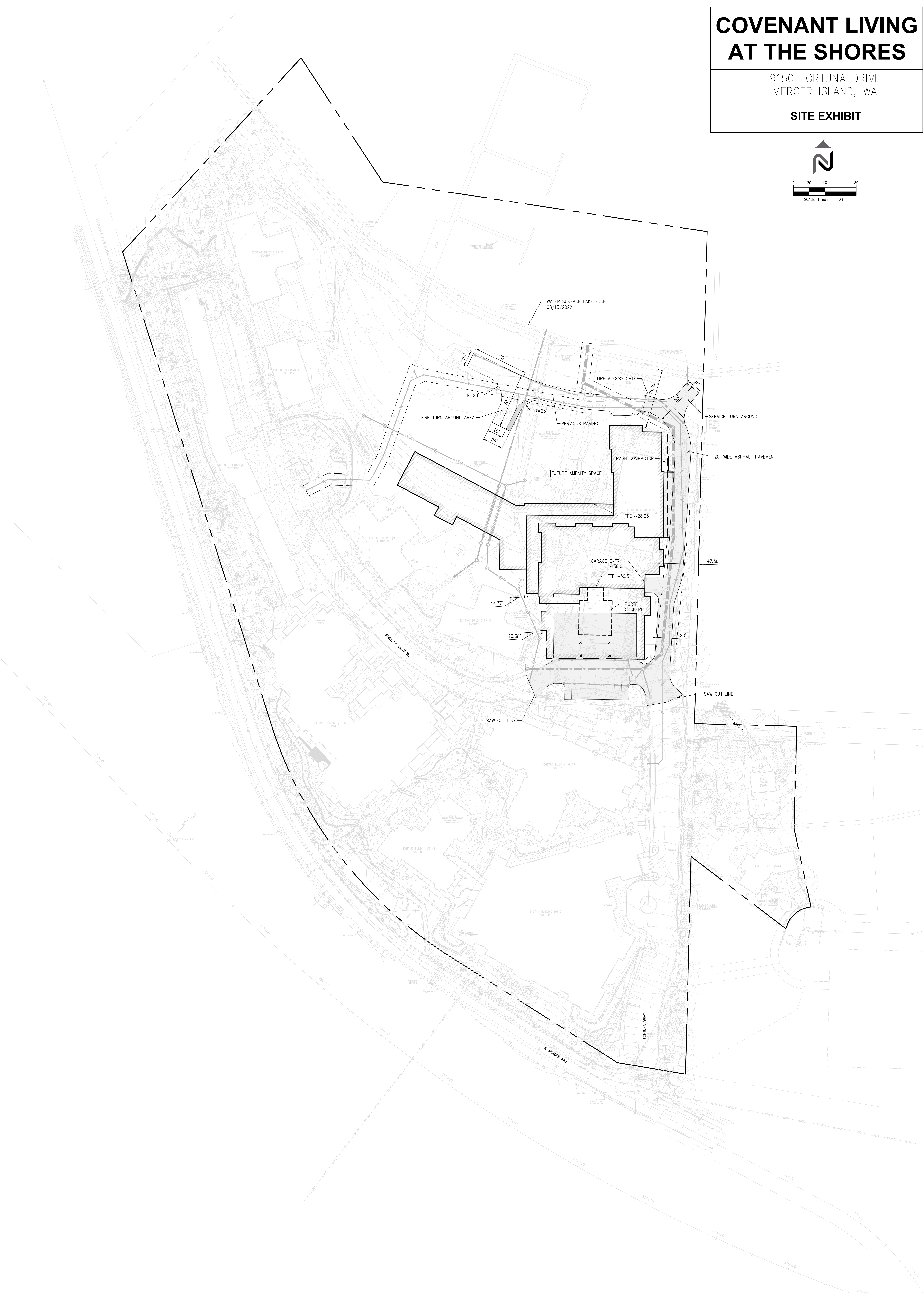
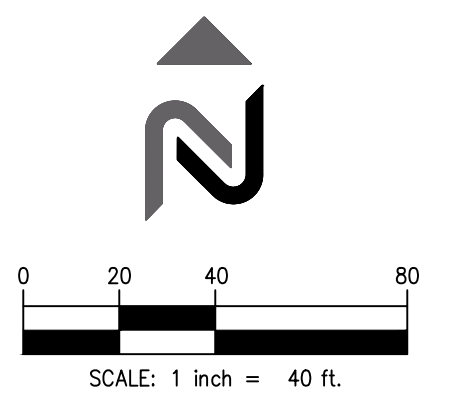
EXISTING SITE EXHIBIT



# COVENANT LIVING AT THE SHORES

9150 FORTUNA DRIVE  
MERCER ISLAND, WA

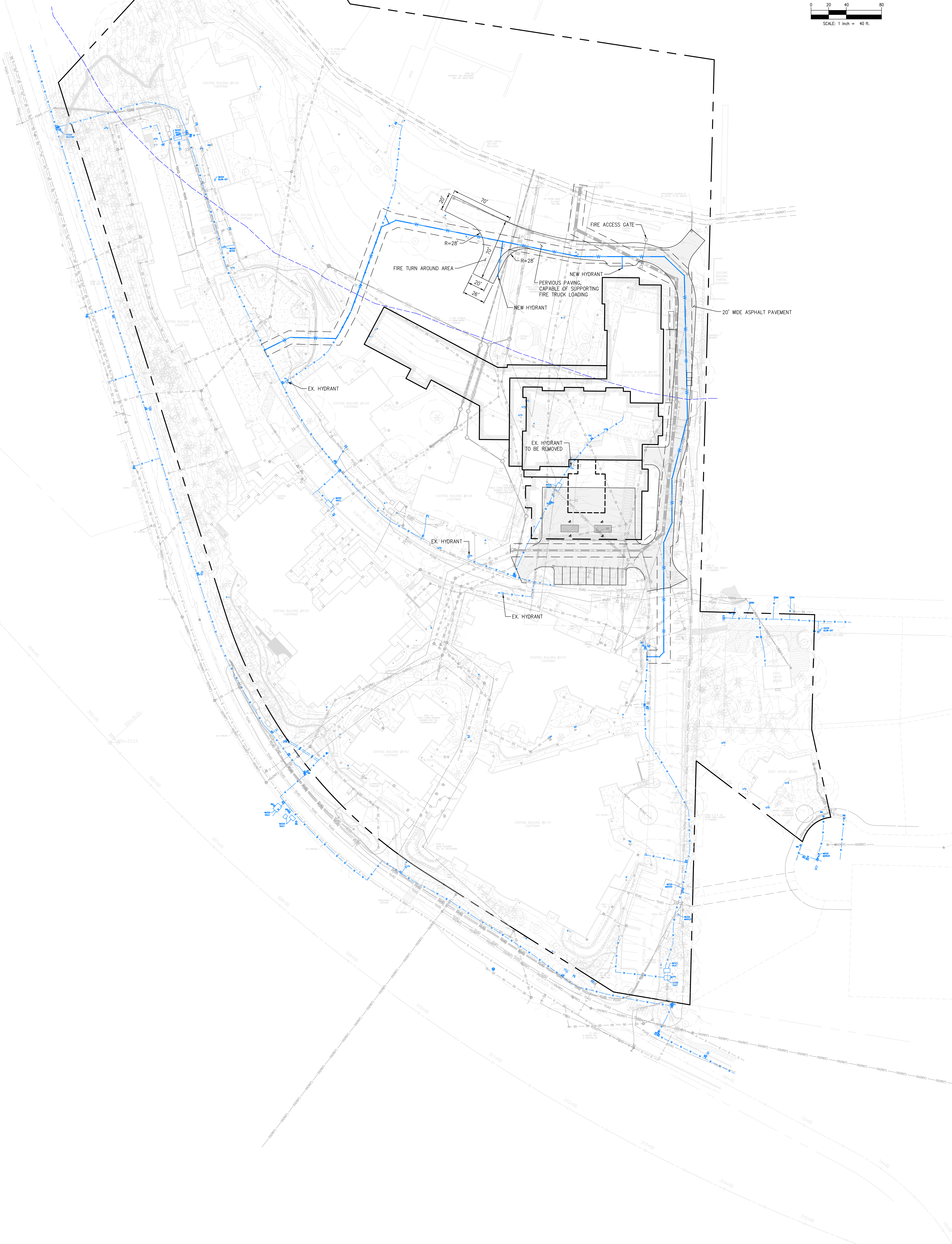
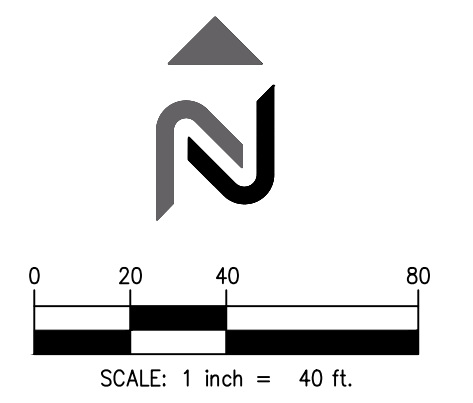
SITE EXHIBIT



# COVENANT LIVING AT THE SHORES

9150 FORTUNA DRIVE  
MERCER ISLAND, WA

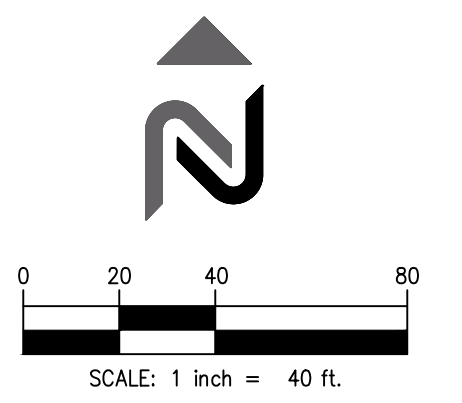
**FIRE SERVICE PLAN**



# COVENANT LIVING AT THE SHORES

9150 FORTUNA DRIVE  
MERCER ISLAND, WA

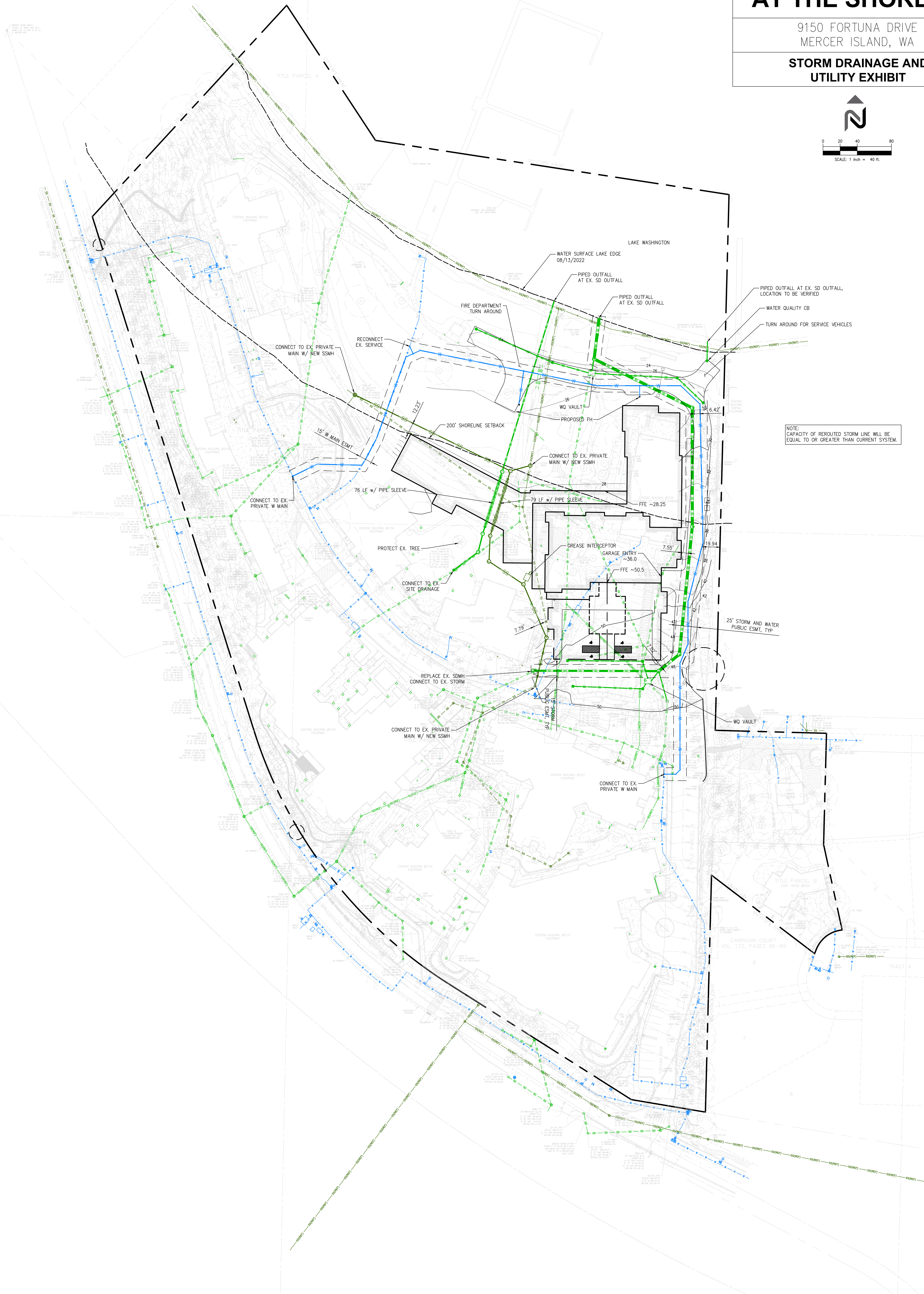
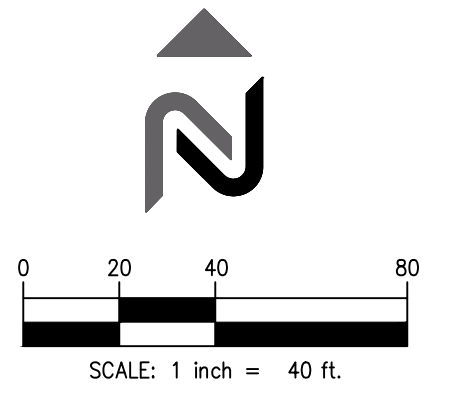
GRADING EXHIBIT



# COVENANT LIVING AT THE SHORES

9150 FORTUNA DRIVE  
MERCER ISLAND, WA

## STORM DRAINAGE AND UTILITY EXHIBIT

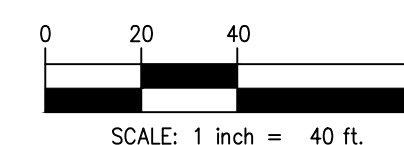


NOTE:  
CAPACITY OF REROUTED STORM LINE WILL BE  
EQUAL TO OR GREATER THAN CURRENT SYSTEM.




# COVENANT LIVING AT THE SHORES

9150 FORTUNA DRIVE  
MERCER ISLAND, WA

## TREE REMOVAL EXHIBIT



### LEGEND

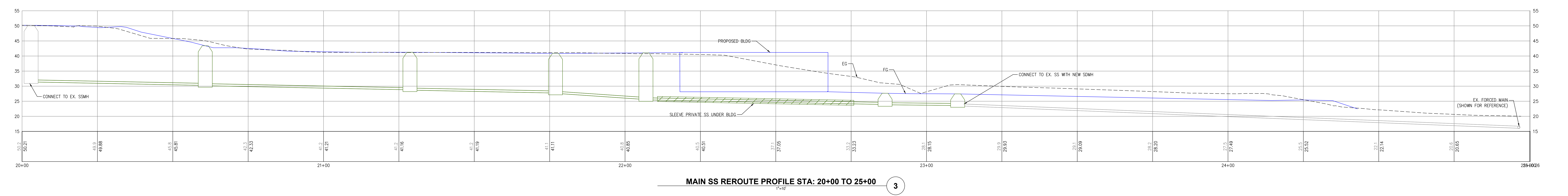
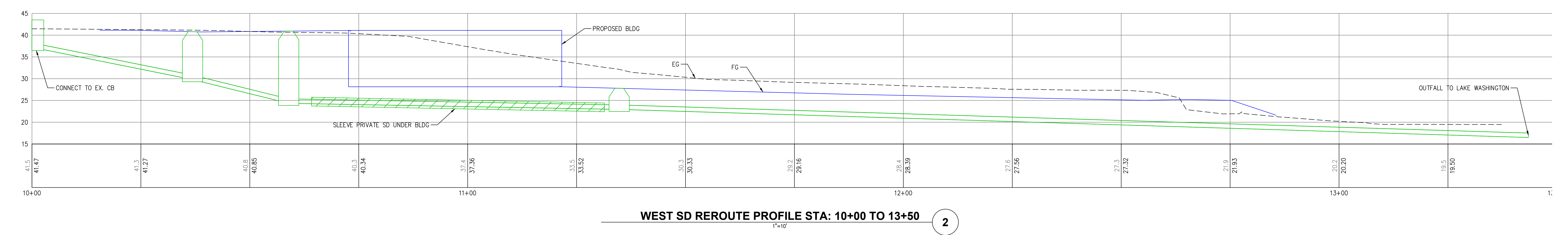
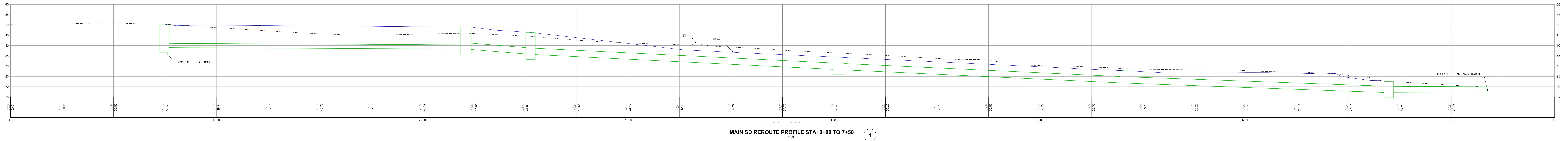
-  TREE TO REMAIN
-  TREE TO BE REMOVED
-  TREE NOT EXAMINED



# COVENANT LIVING AT THE SHORES

9150 FORTUNA DRIVE  
MERCER ISLAND, WA

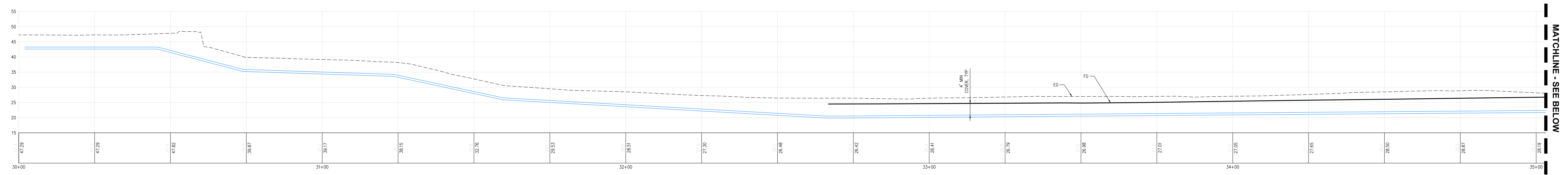
STORM AND SANITARY  
DRAINAGE PROFILES



**COVENANT LIVING  
AT THE SHORES**

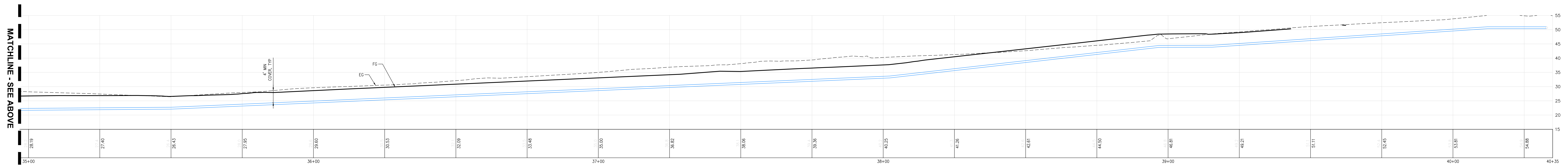
9150 FORTUNA DRIVE  
MERCER ISLAND, WA

**WATER PROFILE**



PRIVATE WATER MAIN PROFILE STA: 30+00 TO 35+00

1



PRIVATE WATER MAIN PROFILE STA: 35+00 TO 40+35

2